

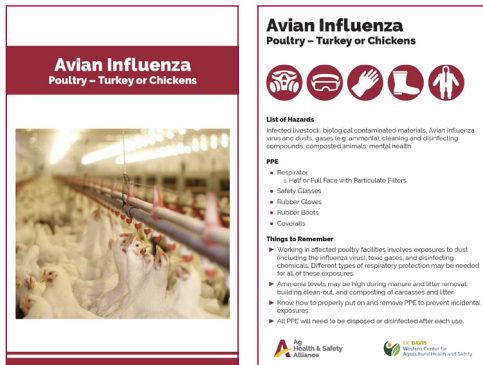
Story Card Facilitator's Guide

What are Story Cards?

Story cards are used to generate discussion, reinforce memory, link to theory, and improve safety culture!

What is the story?

- ▶ Graphic
- ▶ List of Potential Hazards
- ▶ Personal Protective Equipment (PPE)
- ▶ Recommendations and Tips



How to Complete the Activity

Participants will get into groups of 4-6 individuals. Each group will be given 2-3 cards to choose from. Participants will discuss their options and decide on one card for the group. Together, they will review the image and discuss the information on the back of the card. A note-keeper in the group will write down specific discussion points.

We suggest giving the groups about 5 minutes to discuss the story card. Participants will then address the Story Card Questions in front of the larger group. During open discussion, the instructor or manager has the option to display each card on a projector.

Story Card Questions

To best stimulate group discussion, display the questions below on a board, flip chart, or projector.

- ▶ What does the image show?
- ▶ Does the image on the card bring up any situations or workplace events that have happened to you or someone you know in the past? If so, what was it?
- ▶ What types of personal protective equipment (PPE) are listed on the back of the card? Why do you think these types of PPE are recommended for this farm or ranch scenario? (Note: Look at the list of hazards)
- ▶ Does the card bring up any scenarios or situations that you know very little about, or something that you find confusing? Present your questions openly to the rest of class.



Use the optional questions below to stimulate more discussion.

- ▶ Does the image on the card convey a farm or ranch scenario or situation that you can prepare for in advance? If so, how would you prepare?
- ▶ What would you do if there is a supply chain shortage and you are not able to obtain the PPE listed on the card?
- ▶ Are there other safety or health recommendations that you know of that are NOT listed on the card? If so, what are they?

Emergency Preparedness in Action Story Cards

Why is this activity important?

Environmental threats such as extreme weather and zoonotic diseases are real and fast concerns for farmers and ranchers. During natural disasters, agricultural workers are under a lot of stress because they are simultaneously battling economic setbacks while also attempting to care for their livestock and/or crops. During these times, it can be easy for these workers to overlook their own health and safety. Although numerous government sources (e.g., USDA, CDC, EPA) have generated a great deal of resources for workers, many of them are not specific to agriculture.

Previous studies and experiences have shown that it can be confusing for farmers and ranchers to select proper Personal Protective Equipment (PPE) during emergencies. Even though the necessary PPE recommendations during natural disasters are quite clear to scientific professionals, there is a need to translate this information directly to the agricultural workforce. It is also helpful to know what types of PPE to have on-hand in case of PPE supply chain shortages. PPE is a critical aspect of any emergency preparedness plan—especially on the farm or ranch.

The goal of this activity is to give ag workers and students more confidence in making the right PPE decisions during potential emergency scenarios on the farm or ranch.

Use topic-specific **Story Cards** included in this packet to complete an activity at your worksite or in your classroom.